

# Vermont Conservation Design

## Ecologically Functional Landscape

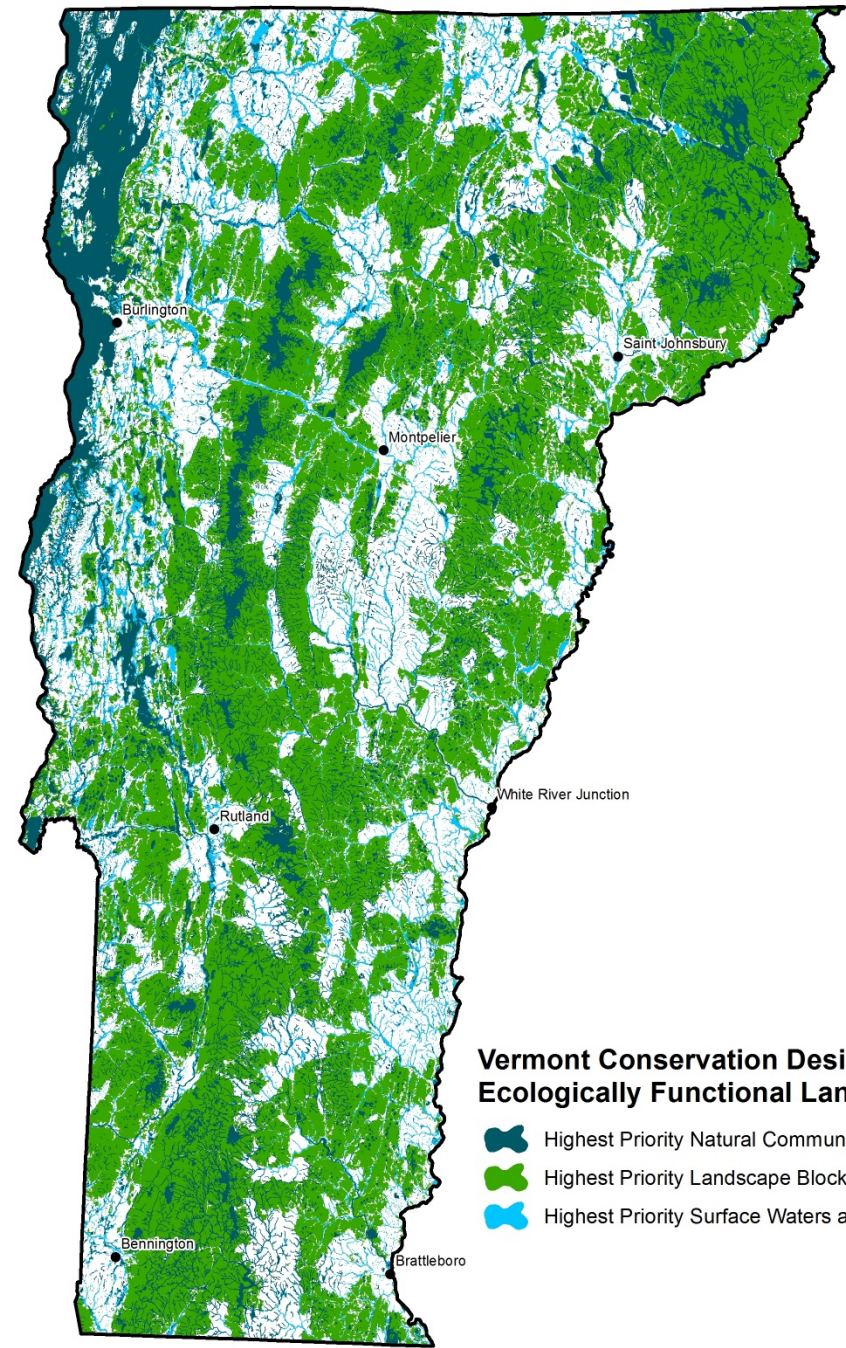
### *Highest Priority Features*

House Committee on Natural Resources, Fish, and Wildlife

March 9, 2021



Eric Sorenson  
Ecologist

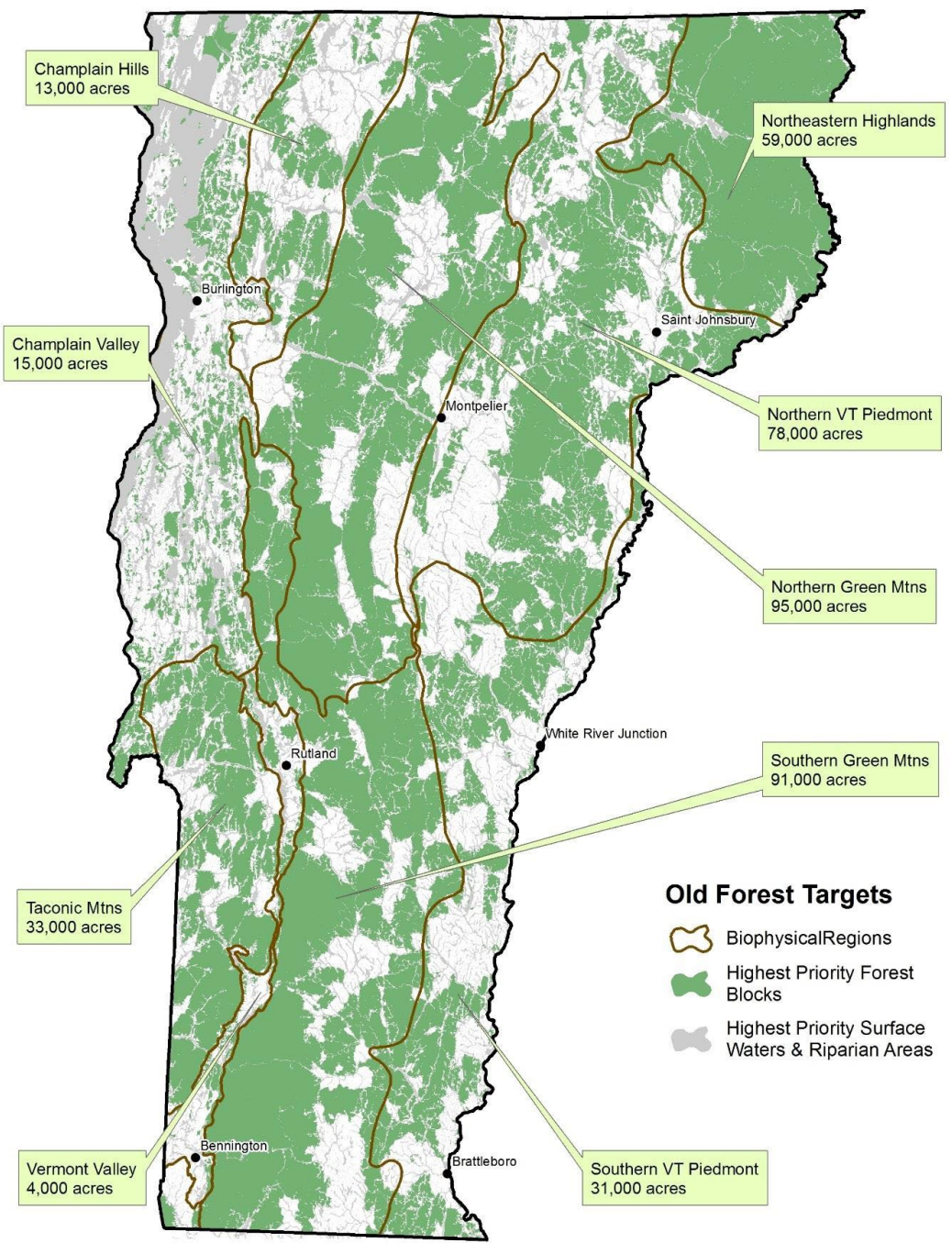


**Vermont Conservation Design  
Ecologically Functional Landscape**

- Highest Priority Natural Community & Habitat Features
- Highest Priority Landscape Blocks
- Highest Priority Surface Waters and Riparian Areas

# Vermont Conservation Design

## Old Forest target acreages within Highest Priority Forest Blocks

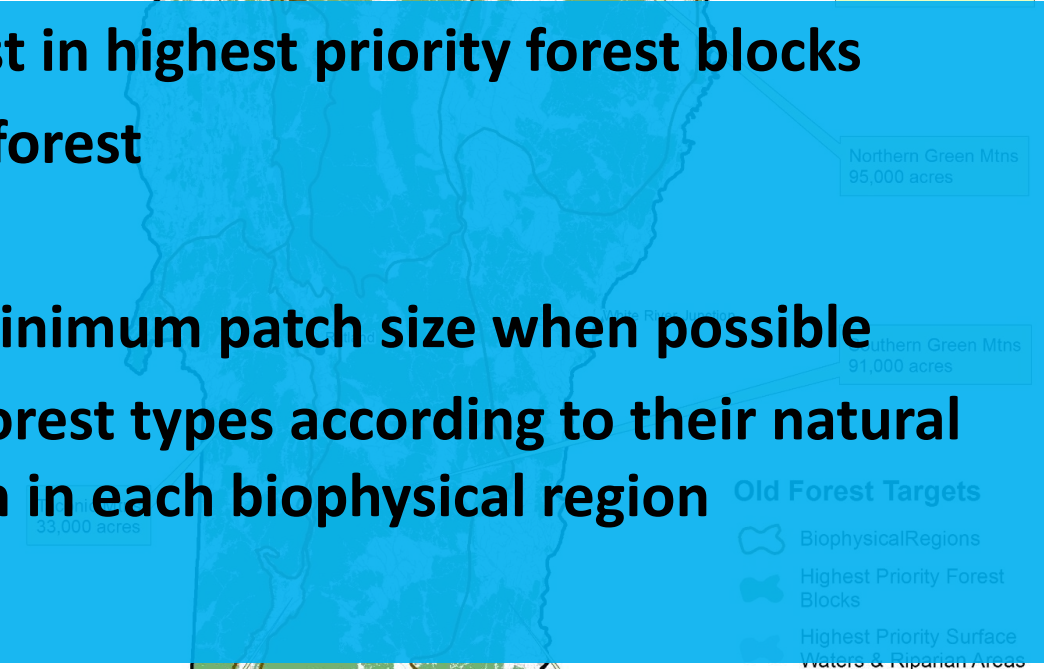
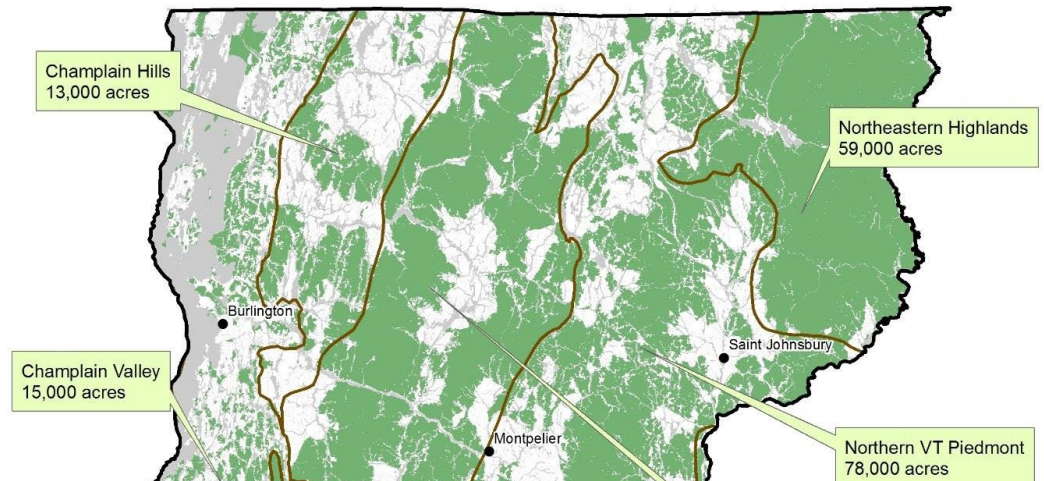




# Vermont Conservation Design

## Old Forest targets

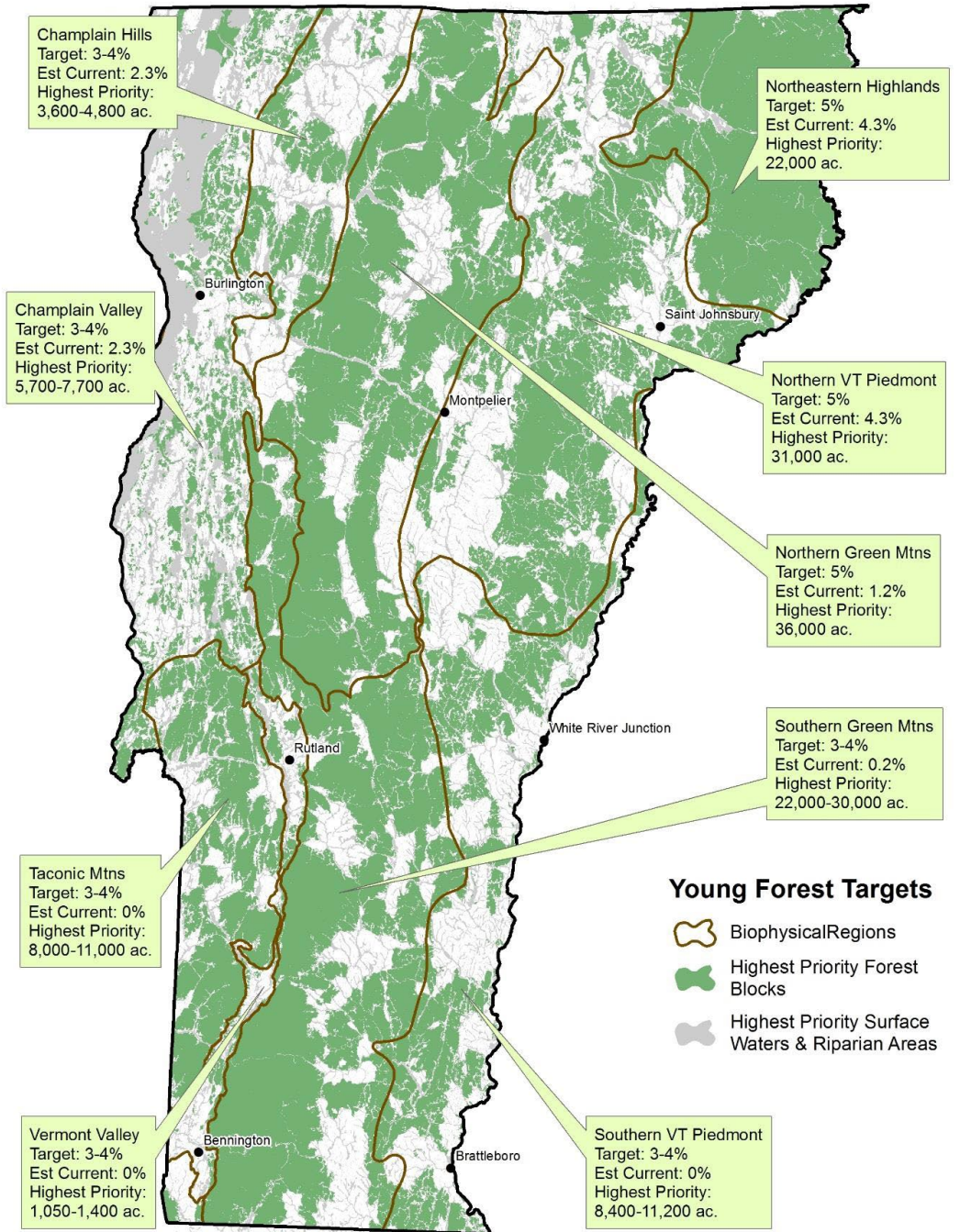
- 15% of matrix forest in highest priority forest blocks
- 9.1% of Vermont's forest
- 419,000 acres
- 1,000-4,000-acre minimum patch size when possible
- Represent matrix forest types according to their natural distribution pattern in each biophysical region



# Vermont Conservation Design

Young Forest target acreages within Highest Priority Forest Blocks

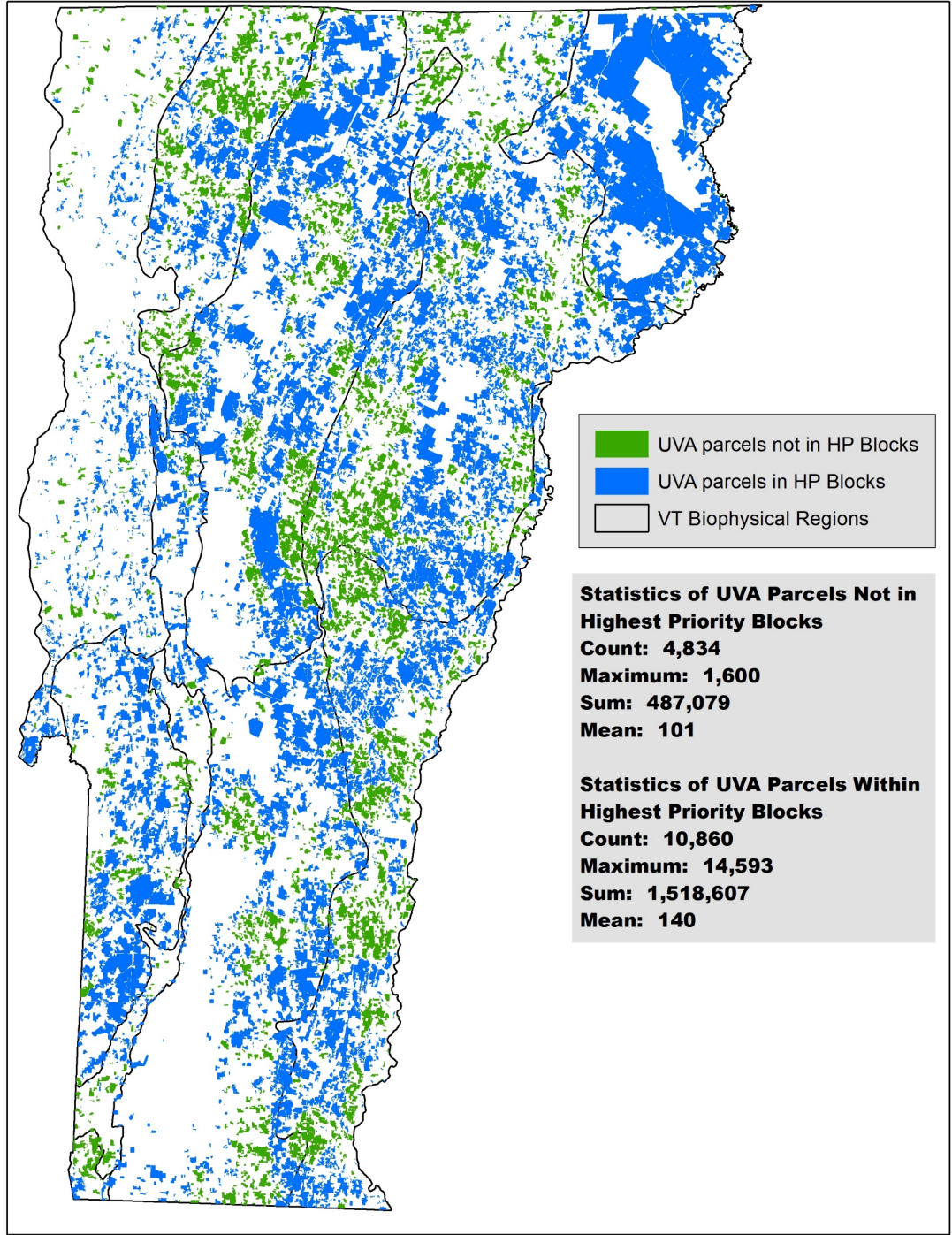
*Old and young forest targets are complementary.*





# Vermont Conservation Design

Use Value Appraisal parcels occurring within and outside Highest Priority Forest Blocks





# Concerns with using Vermont Conservation Design highest priority features as a condition enabling enrollment of “conserved natural forests”:

- Many important forests are located outside highest priority forest blocks.
- Old forest targets for acreage, patch size, and forest type representation cannot be met by UVA parcels.
- Fairness to landowners.

